

# CITIES on the FRONTLINE

---

## Coronavirus Speaker Series:

Sharing Knowledge to Respond with Resilience



GLOBAL  
RESILIENT  
CITIES  
NETWORK



WORLD BANK GROUP

**#10:**

Thursday, 14 May, 2020


10.30 AM EST – 10.30 PM Singapore time

## Migrant and Refugee Sensitive COVID-19 Response and Recovery

Samer Saliba, Urban Advisor, International Rescue Committee

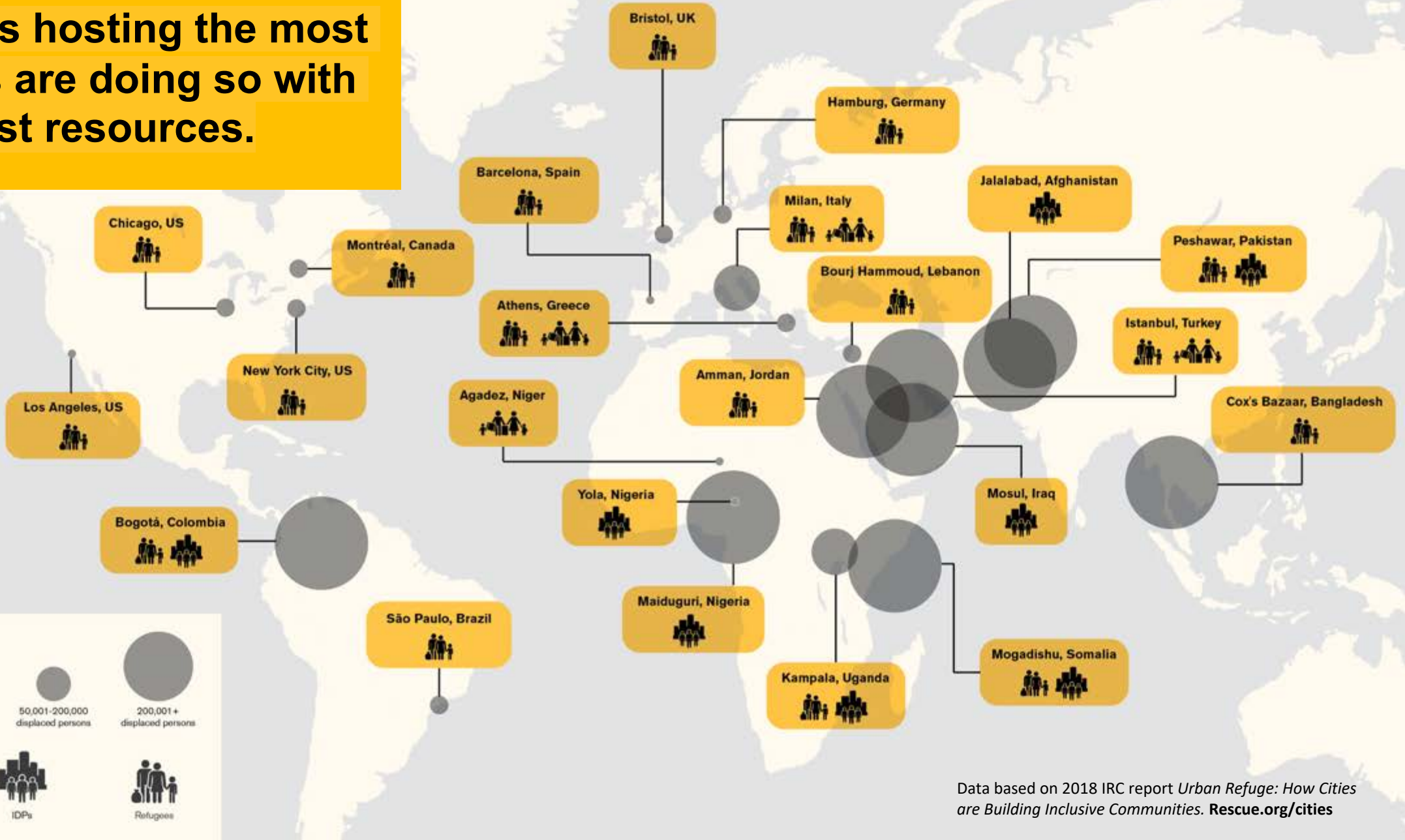
## IRC's Six Month Response Priorities

- Keep our staff and our clients safe
- Build from evidence and quality standards
- Adapt to fast-evolving needs using technology and remote approaches
- Ensure that gender equality is integrated throughout all aspects of our response
- Support the local and national response.

 World risks up to  
**1 billion cases**  
**3.2 million deaths**  
from COVID-19 across fragile countries  
if we don't act now.

Rescue.org 

# The cities hosting the most refugees are doing so with the fewest resources.



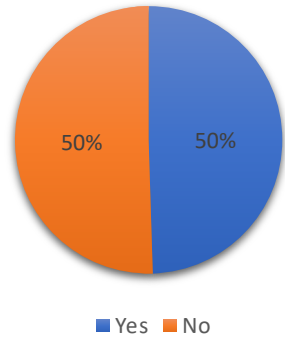
Data based on 2018 IRC report *Urban Refuge: How Cities are Building Inclusive Communities*. [Rescue.org/cities](http://Rescue.org/cities)

# Nairobi, Kenya

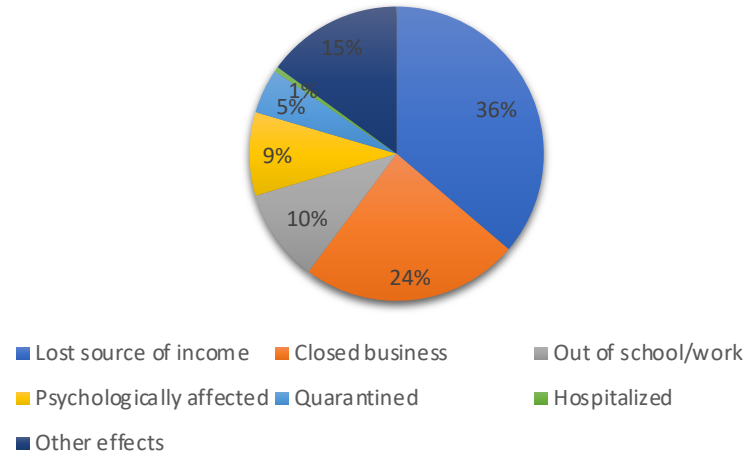


# IRC Kenya COVID Survey (1,331 IRC Clients in Nairobi & Surrounding Counties)

## Have you or your family been victims of COVID?



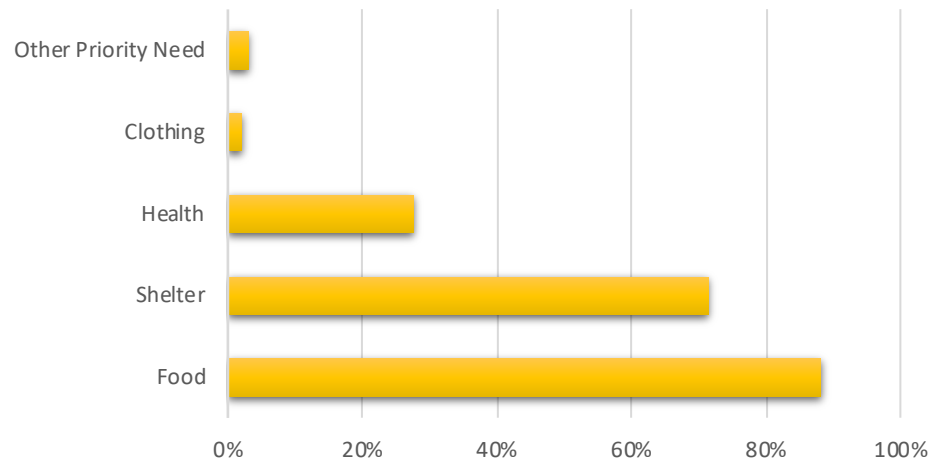
## How have you been affected?



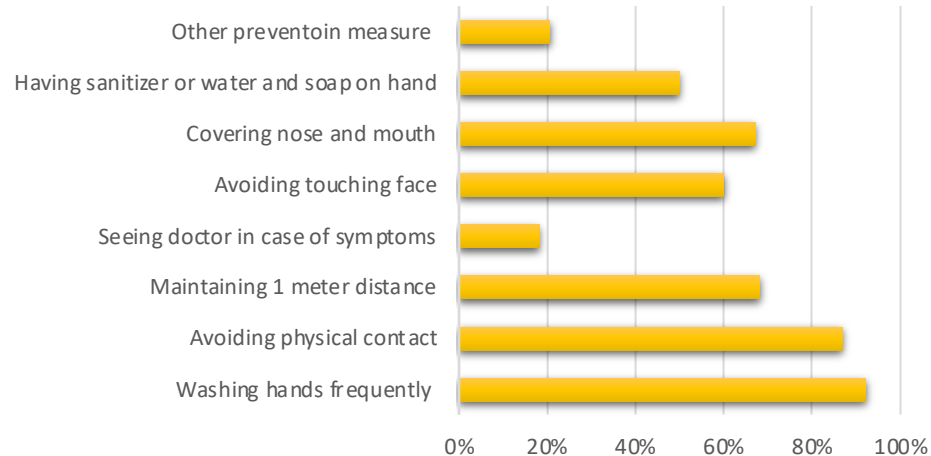
“I noticed some Congolese who were facing challenges like getting a loan to start a business, for example, there is one guy who wanted a loan to buy a motorbike for transport services and because I knew he was genuine I was ready to be his guarantor but other Kenyans refused. Some Kenyans discriminate them and they do not want to support them because they say if a refugee dies where will you take their dead bodies and how do you know his or her background.”

- Kenyan IRC Client

## Priority needs



## Infection prevention measures



## Livelihoods Lessons from Nairobi

- Maintain communication with clients to monitor livelihoods needs
- Leverage communication channels to share health and hygiene information
- Rely on referral channels with other organizations, especially for cash assistance
- Provide remote business support in the interim to pivot business models & follow safety precautions
- Don't lose ground while preparing for future livelihoods support



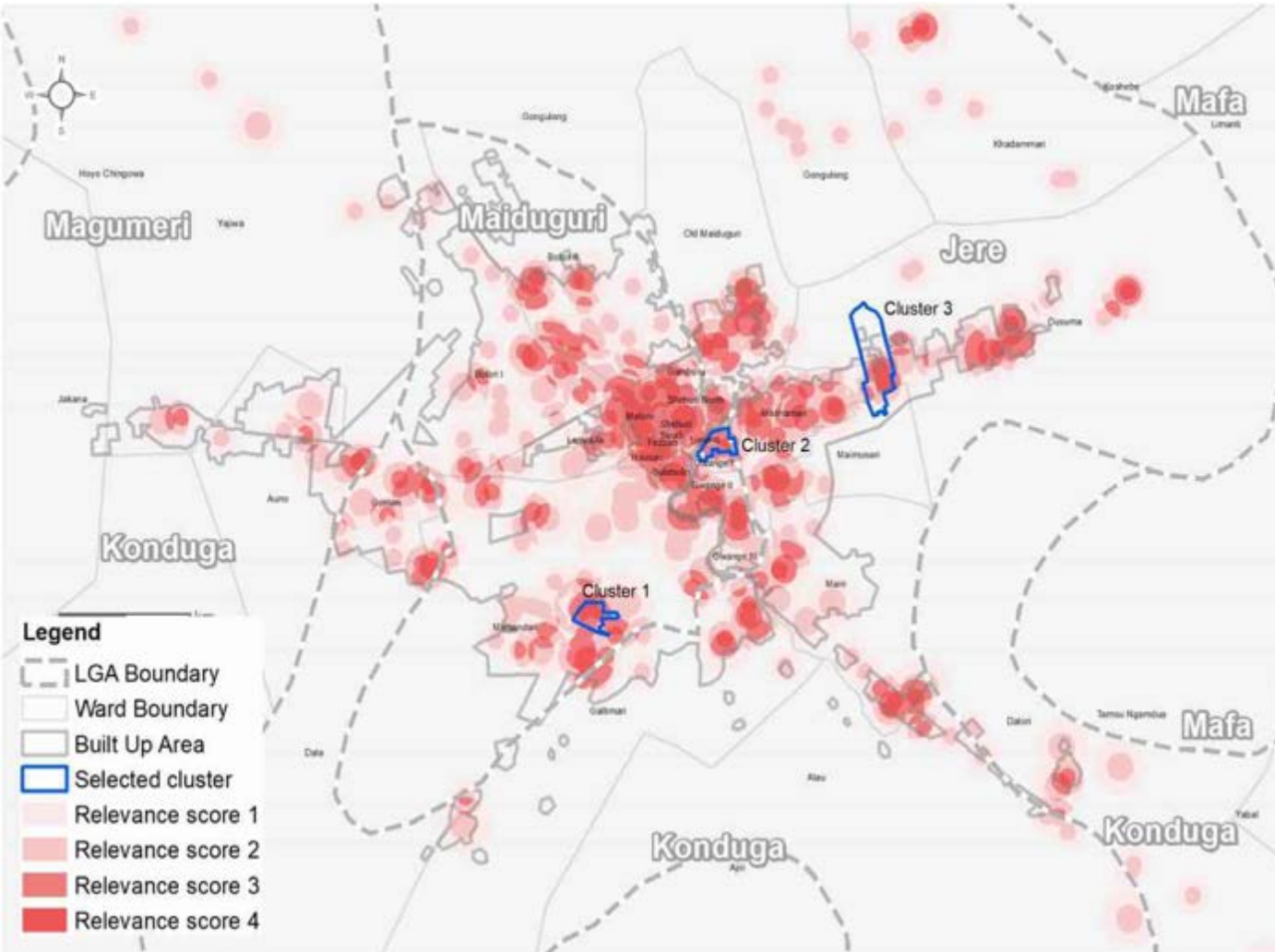
An IRC-supported entrepreneur in Kibera

# From Response to Resilience: Maiduguri, Nigeria



Empowering local authorities and local communities to jointly prepare for and respond to natural and man-made hazards, thus **building the resilience of three neighborhoods in Maiduguri.**

# Maiduguri Data Analysis



- # of IDPs in Maiduguri LGA: **~279,550**
- # of confirmed COVID cases in Borno State: **125+**
- Avg. household size: **10.4**
- % living with non-family members: **40.3%**
- **73%** of households report not having enough water though **86%** of community leaders identify hand washing as the primary means of preventing infection
- **The majority** rely on informal daily wages while **81%** report food as their largest expense

## Top 3 most reported preferred type of information on COVID-19:

How to protect oneself from the disease	61%	■
Symptoms of COVID-19	48%	■
The way the disease is transmitted	43%	■

Data based on pre-Covid HH survey and post-Covid survey of traditional leaders conducted as a part of the ECHO-funded *From Response to Resilience* project.



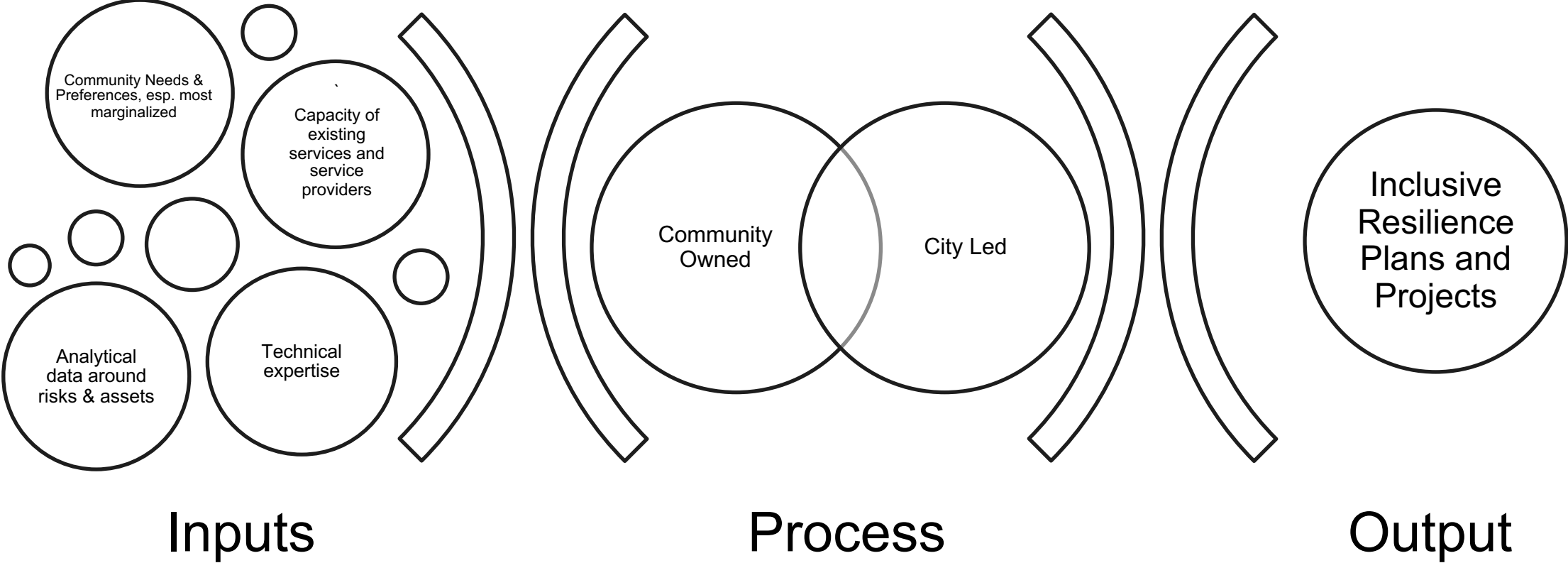


# Community Resilience Lessons from Maiduguri

- Existing community channels and community trust is paramount
- Need an intentional focus on displaced and the most marginalized
- Document failures in infrastructure, information, and inclusion in order to learn from them
- Plan early, plan ahead – the road to recovery starts in the response



# Inclusive City Planning



*“This is a trying time for me, my family, and my community. Just like most of us here I am an internally displaced person and life has been tough ever since we settled here in Maiduguri. But, with time, I have started rebuilding my life with the petty trade I am engaged in. I need to go out for my daily bread but due to the government restrictions on movements, even that has halted and no aid is coming.*

***I feel like I will lose everything once again.”***

## 5 Objective for an Inclusive Response and Recovery

1. Ensure city response and recovery plans are inclusive of displaced
2. Support social cohesion as a public health intervention
3. Respond to emergency needs now while planning for future livelihoods
4. Ensure equal access to essential services
5. Engage Displaced Communities as COVID-19 Response Partners

**Cities are on the  
frontline.**

**At-risk communities  
are first responders.**

---

# CITIES on the FRONTLINE

---

## Coronavirus Speaker Series:

Sharing Knowledge to Respond with Resilience



GLOBAL  
RESILIENT  
CITIES  
NETWORK



WORLD BANK GROUP