

CITIES on the FRONTLINE

Coronavirus Speaker Series:

Sharing Knowledge to Respond with Resilience



GLOBAL
RESILIENT
CITIES
NETWORK



WORLD BANK GROUP

#11: Pandemic Resilient City

Thursday, 21 May 2020

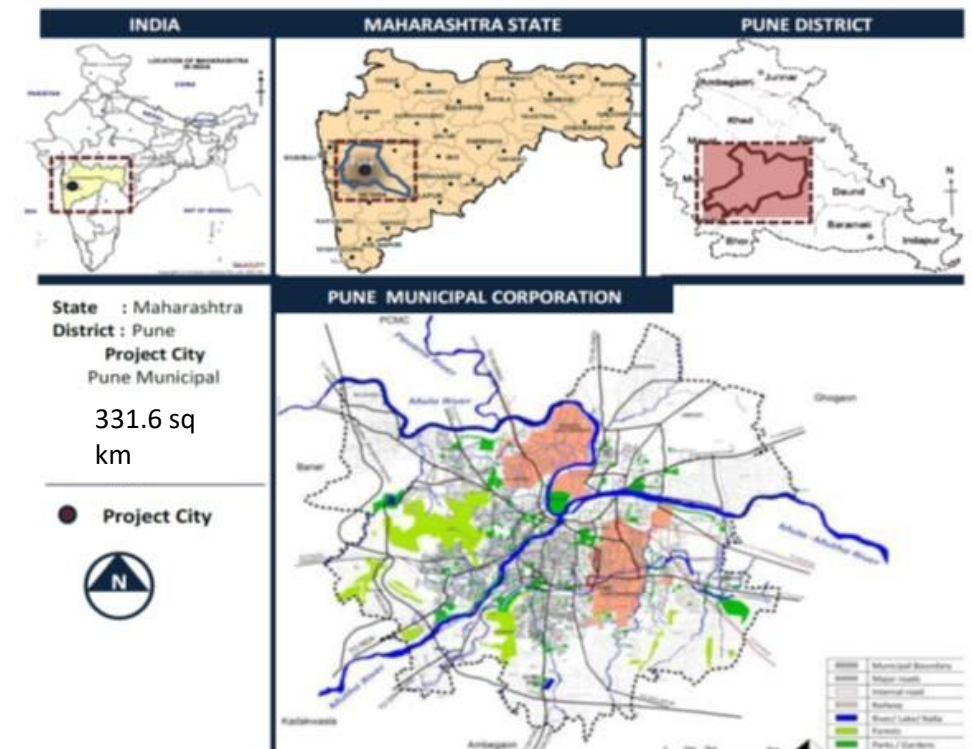
8.30 AM EST – 12.30PM GMT - 8.30 PM Singapore time

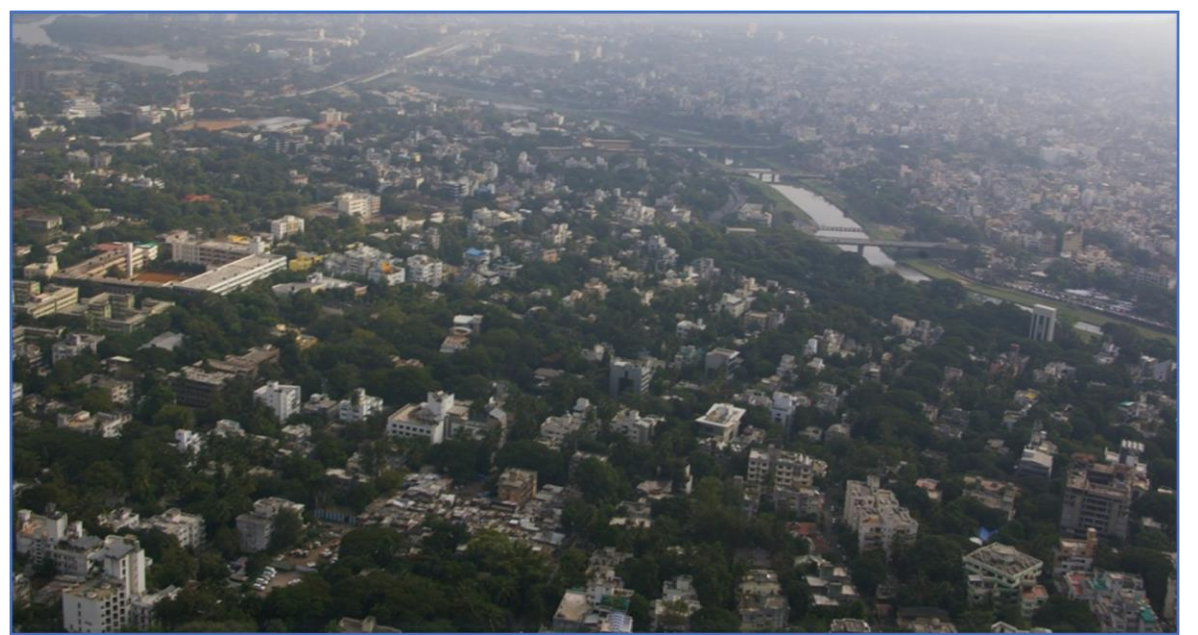
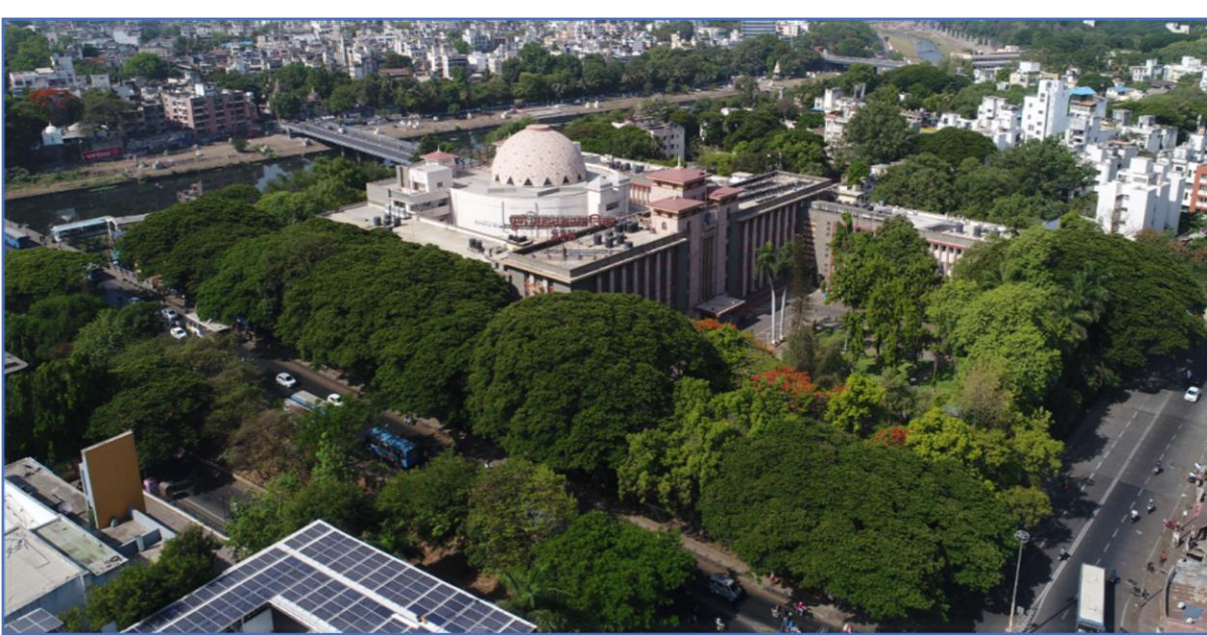
“Data driven informed decision making during COVID-19 response ”

Mahesh Harhare,
Chief Resilience Officer (CRO) - Pune City
GRCN

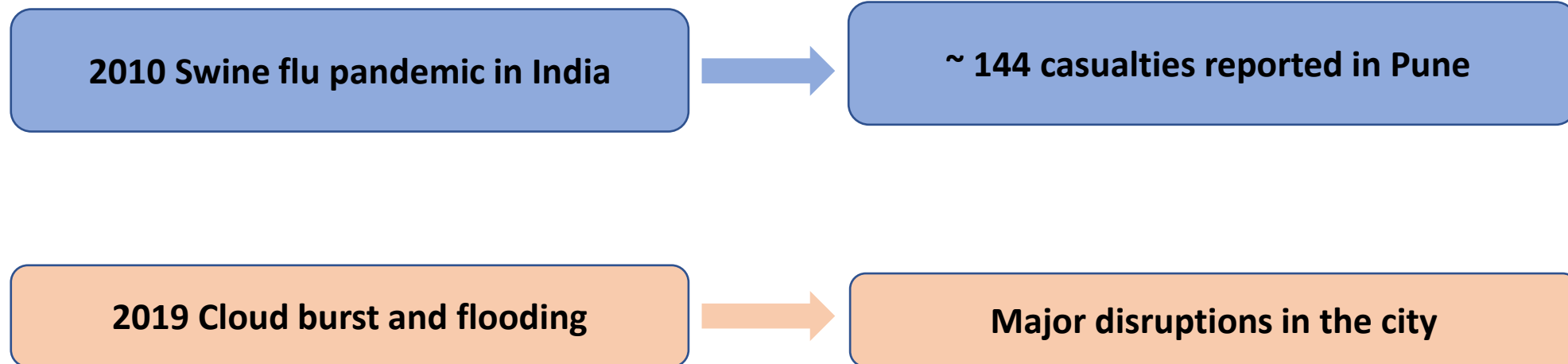
Pune City

- Pune is hub for IT and Automobile industries
- Known as 'Oxford of East'
- Pune Municipal Corporation (PMC) administers Pune City
- Population of Pune is ~ 5 mn (2020 estimates)
- Around 28% population resides in 564 no. of slums



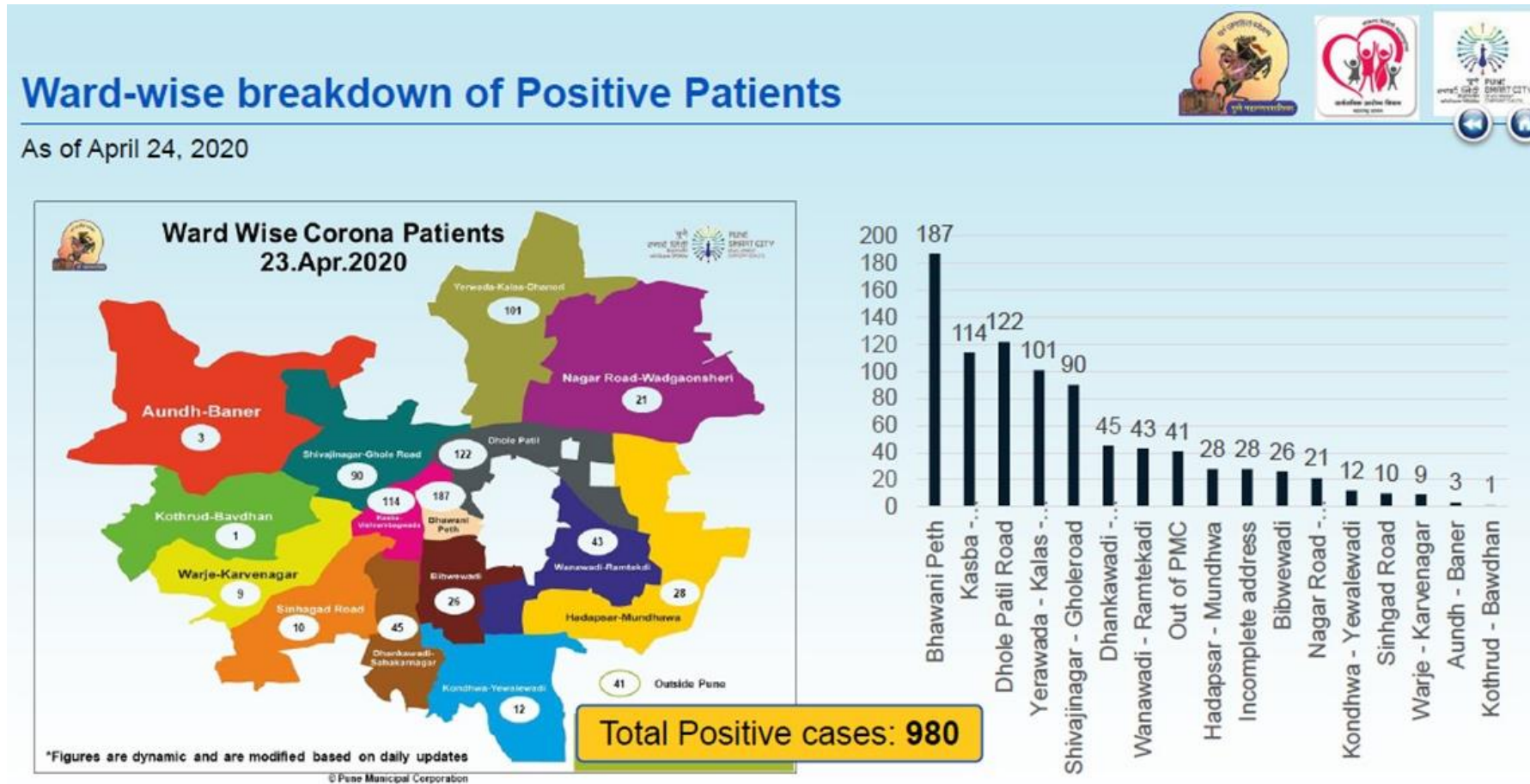


Pune - past disasters and pandemics



- Challenges in availability of reliable data and its effective use for analysis
- Lack of timely forecast of monsoon data
- Lack of interagency coordination

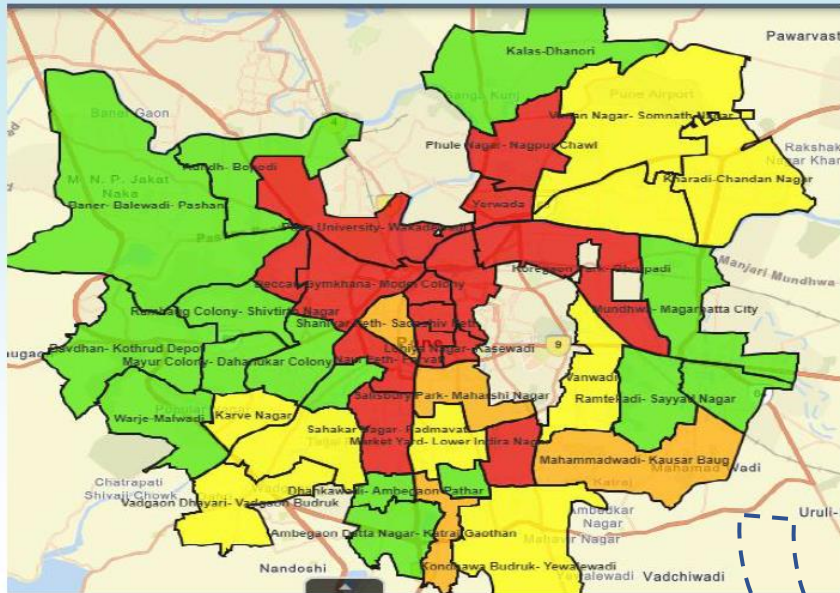
Corona Outbreak - 9th March - 1st COVID-19 case in Pune



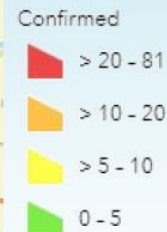
- First time the city has effectively used spatial tools for mapping and analyzing dynamic data for effective decision making and further disseminating it to different stakeholders

City continued spatial mapping and analysis

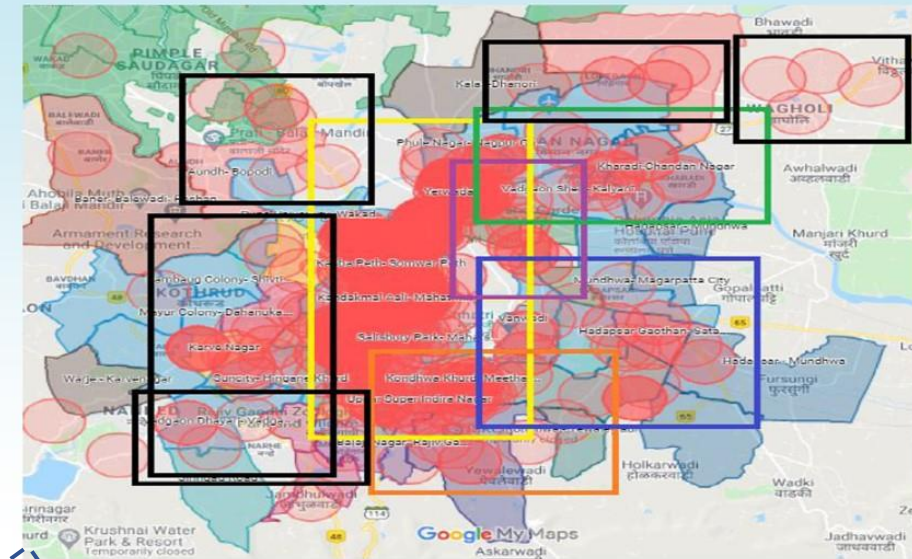
Prabhag level Mapping of cases...as on 23 April 2020



Prabhag Wise Confirmed Cases

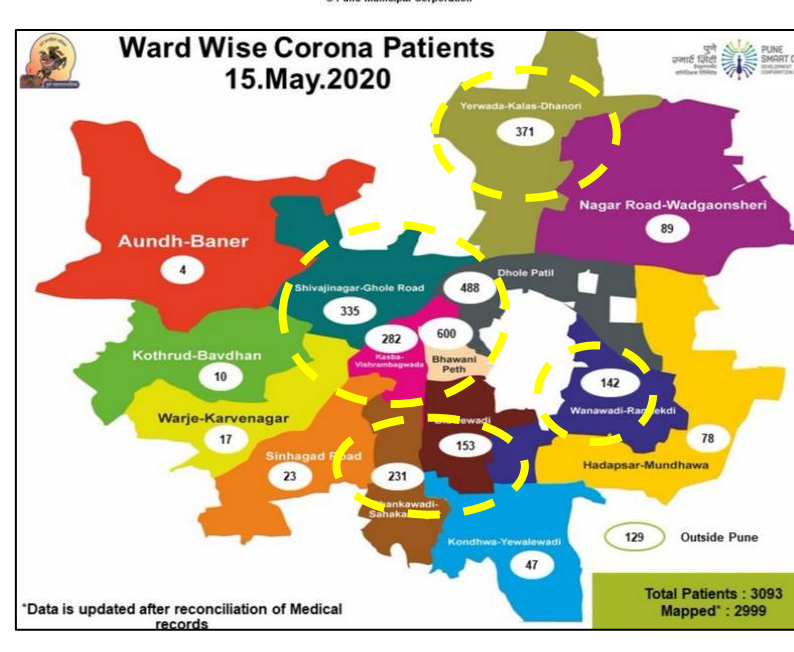
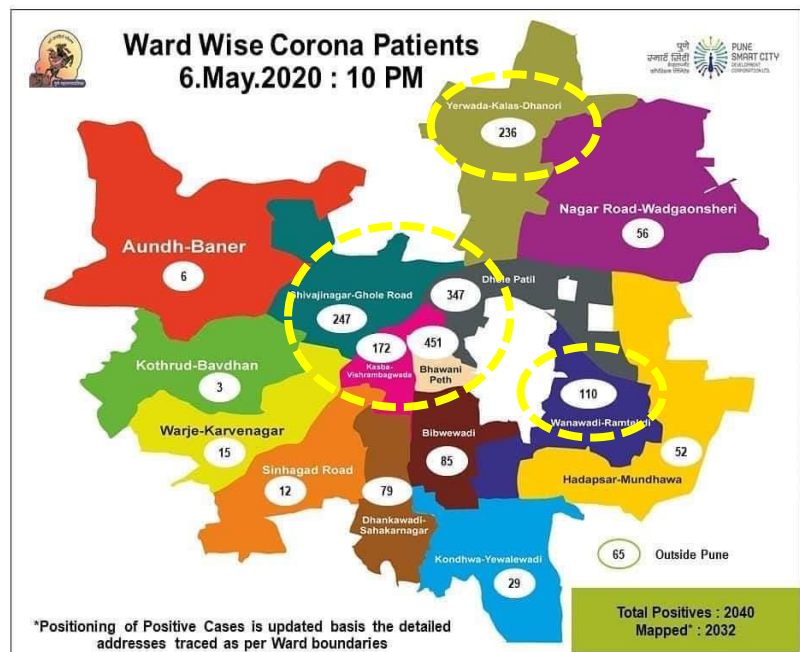
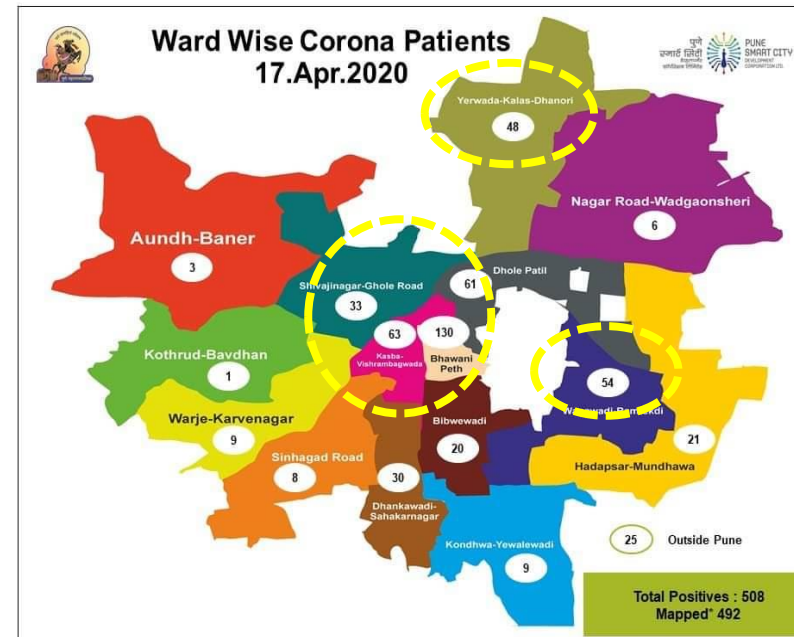
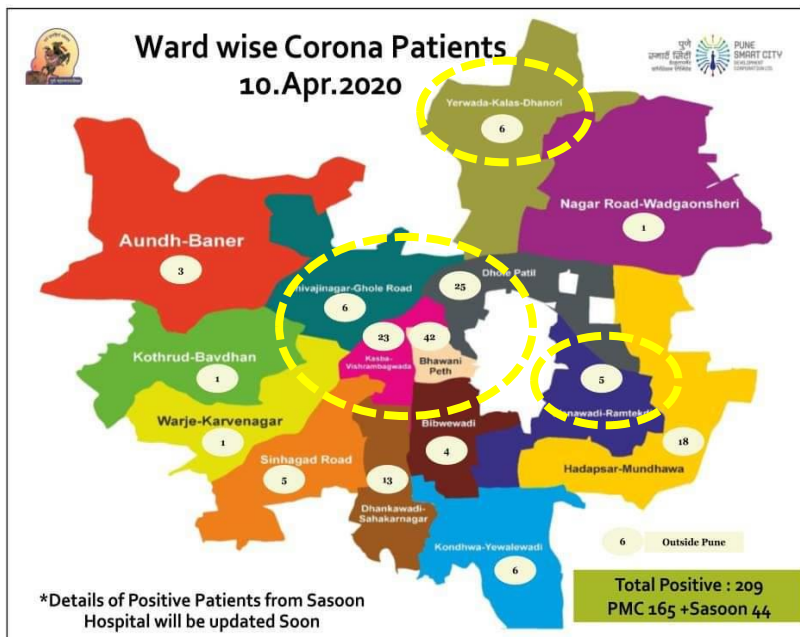


Containment Zone Buffer Analysis



- Spatial mapping helped in analyzing dynamic changes in COVID-19 cases across wards and sub wards within Pune city

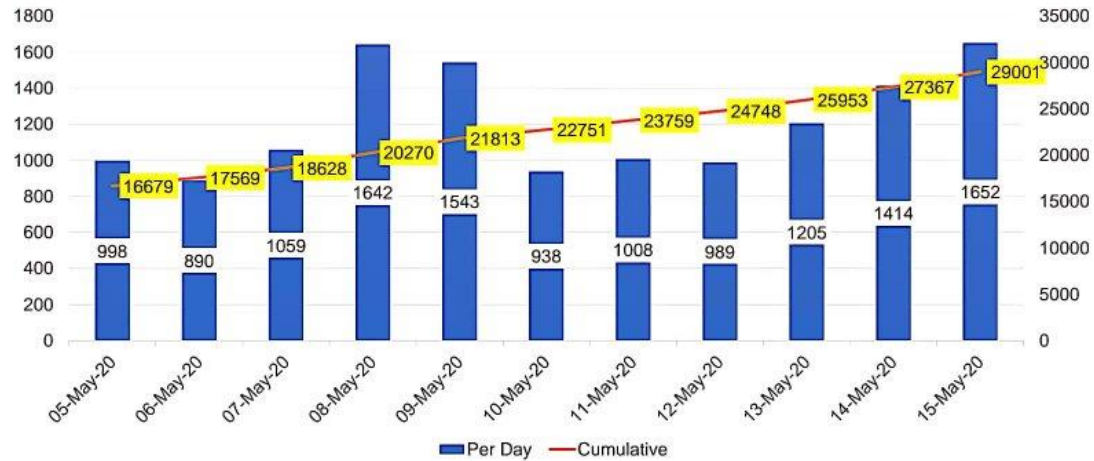
With more granular data, micro containment zones were delineated & efficient allocation of critical resources done



City continued tracking, testing, isolation & testing

Sample Testing Trend

As of May 15, 2020



Positive Cases Trend

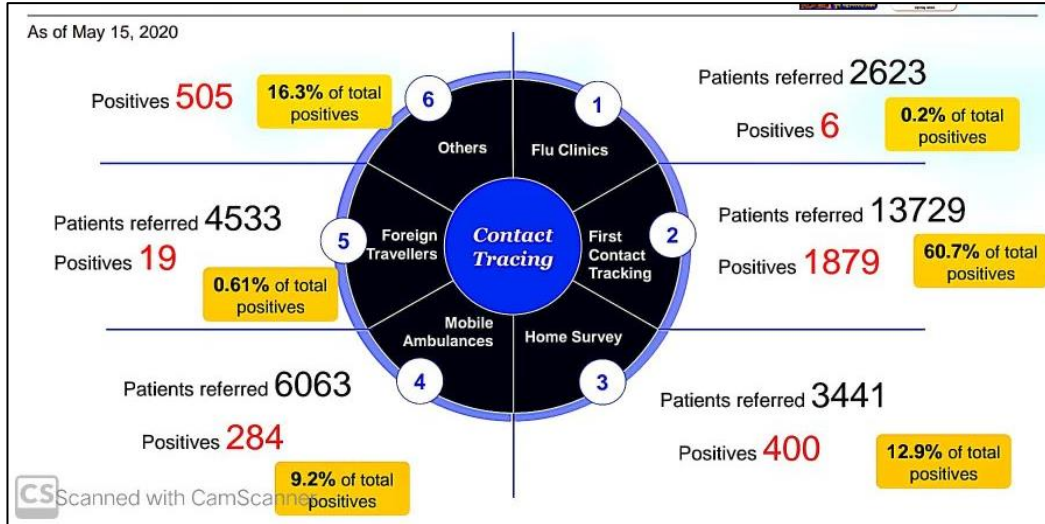
As of May 15, 2020



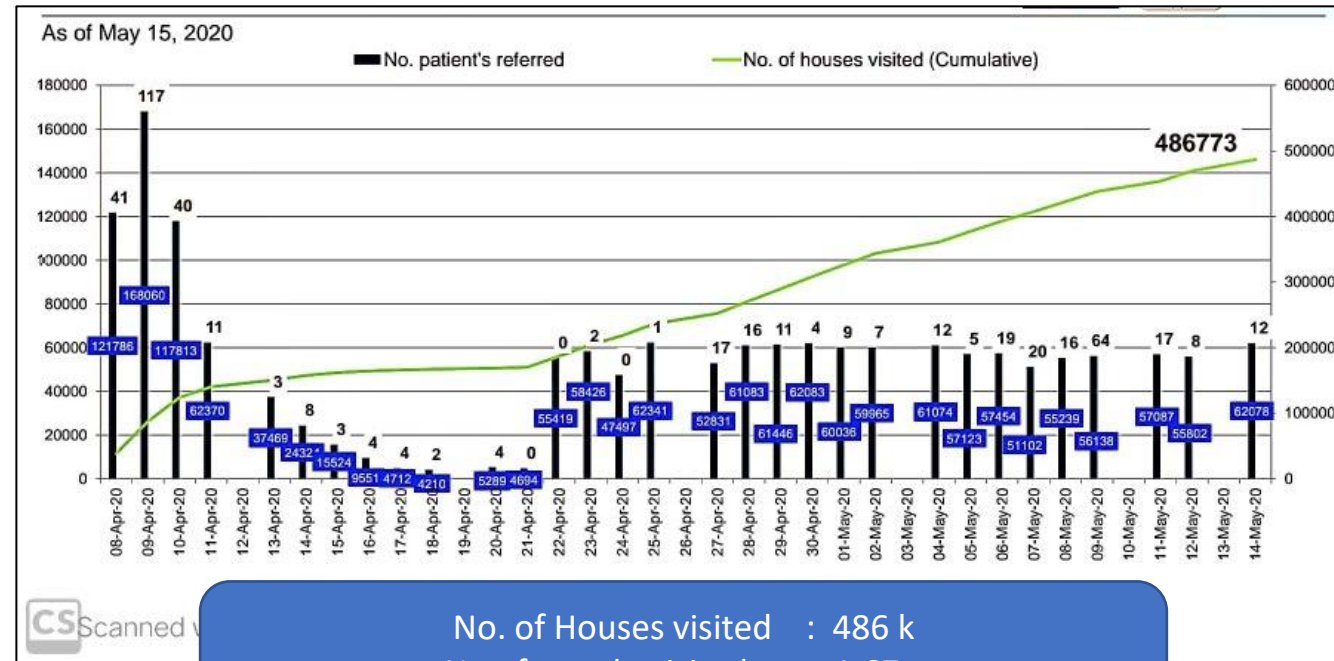
- Daily testing rate has increased substantially, supported with household surveys & mobile ambulances
- With substantial efforts, daily cases are now contained at the level of 2nd May

Focused strategies and actions formulated

- Contact tracing strategy



- High risk area survey report summary



No. of Houses visited : 486 k
 No of people visited : 1.67 mn
 No. of patients referred : 477

- Supply of essentials to Containment zones

As of May 15, 2020

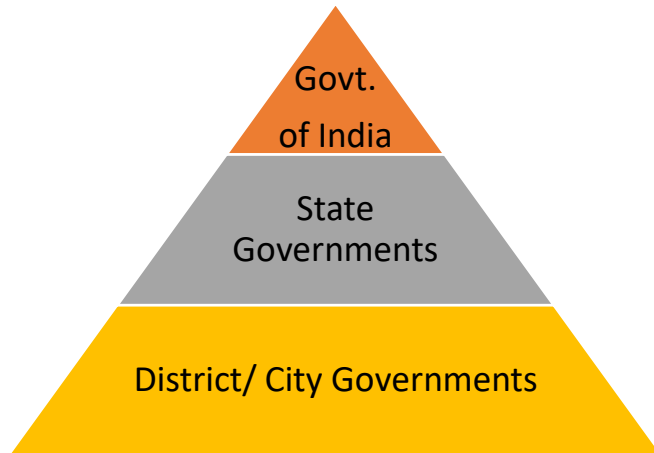
Order have been placed for 70,000 Ration Kits worth Rs. 8 Cr

Sr. No.	Area	Supplied
1	Shivajinagar – Gholerod (Patil Estate, patkar plot, Kamgar putala)	2500
2	Dhole Patil Road	4000
3	Bhawani Peth	2937
4	Yerawada - Kalas - Dhanori	3175
5	Kasba - Vishrambaugwada	2806
6	Nagar Road - Vadgaonsheri	1230
7	Dhankawadi - Sahakarnagar	900
Total		17548

CS Scanned with CamScanner

Future Plans - processes and actors involved

- In India, COVID-19 pandemic is addressed through Three-tiered Institutional structure
- Relief and recovery packages to be provided by Center and State
- Pune's labs and pharma companies continue to play substantial role in India's fight against Corona

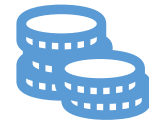


Issue of guidelines → Testing protocol & meth. → supply of kits



Future Plans – short term and long-term plans

- State govt. in consultations with the Industry Associations & ULBs is chalking out plans for opening of economic activities
 - Lockdown will be opened up slowly in phase wise manner, with Green zones getting preference
 - >50% employees of IT companies will probably continue to work online
 - Educational institutes too are adopting online mode
- Relief and recovery packages to be provided by Center and State
- Cascading effect
 - Upcoming monsoon (June- Sept), will bring more challenges due to the flooding
 - So city need to be prepared for that as well



Future Plans – key learnings

- City need to think on decentralised planning - markets, institutes, economic activities etc.
- Slum rehabilitation/ redevelopment has become pressing need
- Strengthening Public Health system
- Further digitalisation and advanced use of technology are critical
- Collaboration with NGOs, researchers and partners for sharing of data



CITIES on the FRONTLINE

Coronavirus Speaker Series:
Sharing Knowledge to Respond with Resilience



GLOBAL
RESILIENT
CITIES
NETWORK



WORLD BANK GROUP